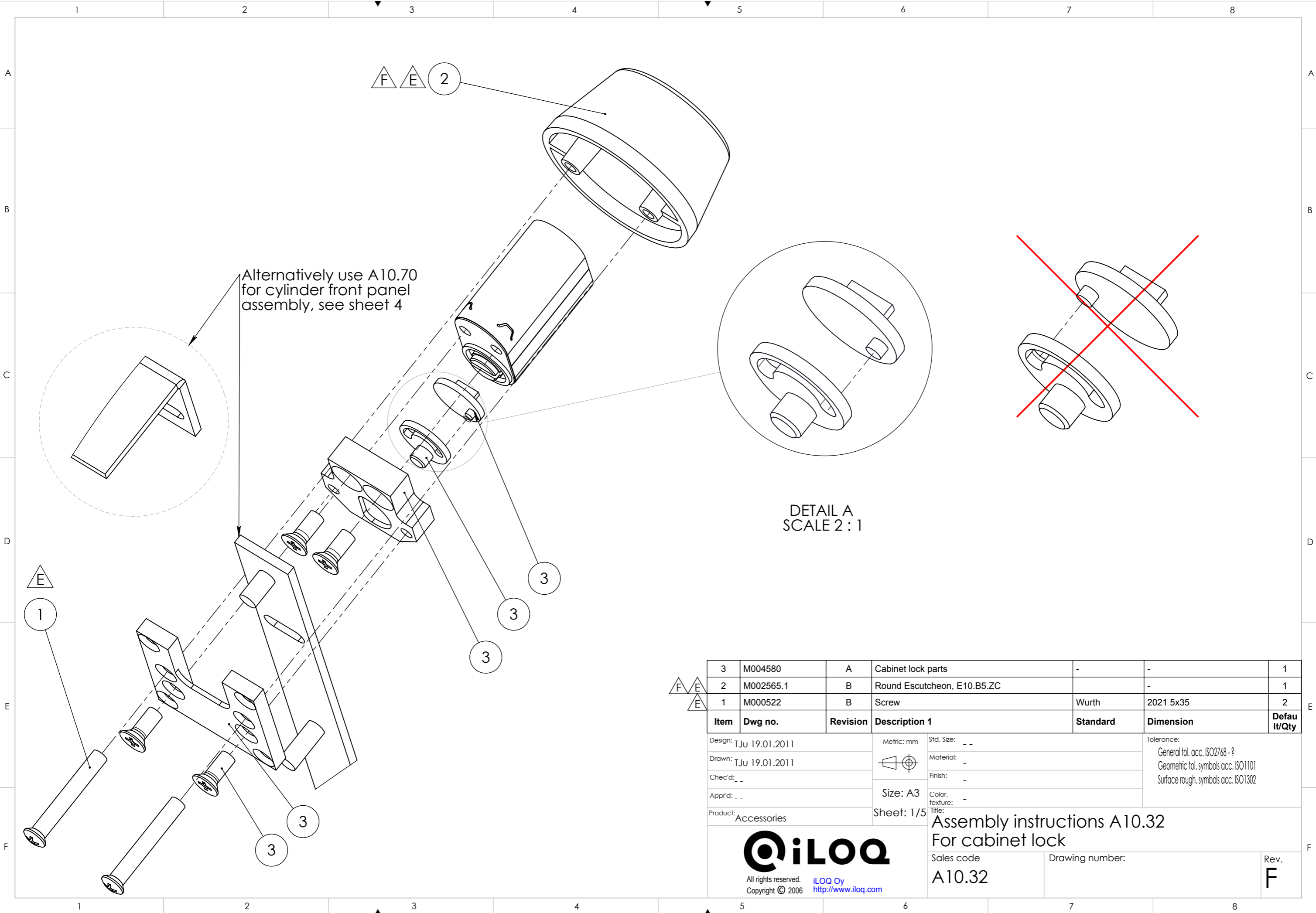
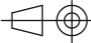

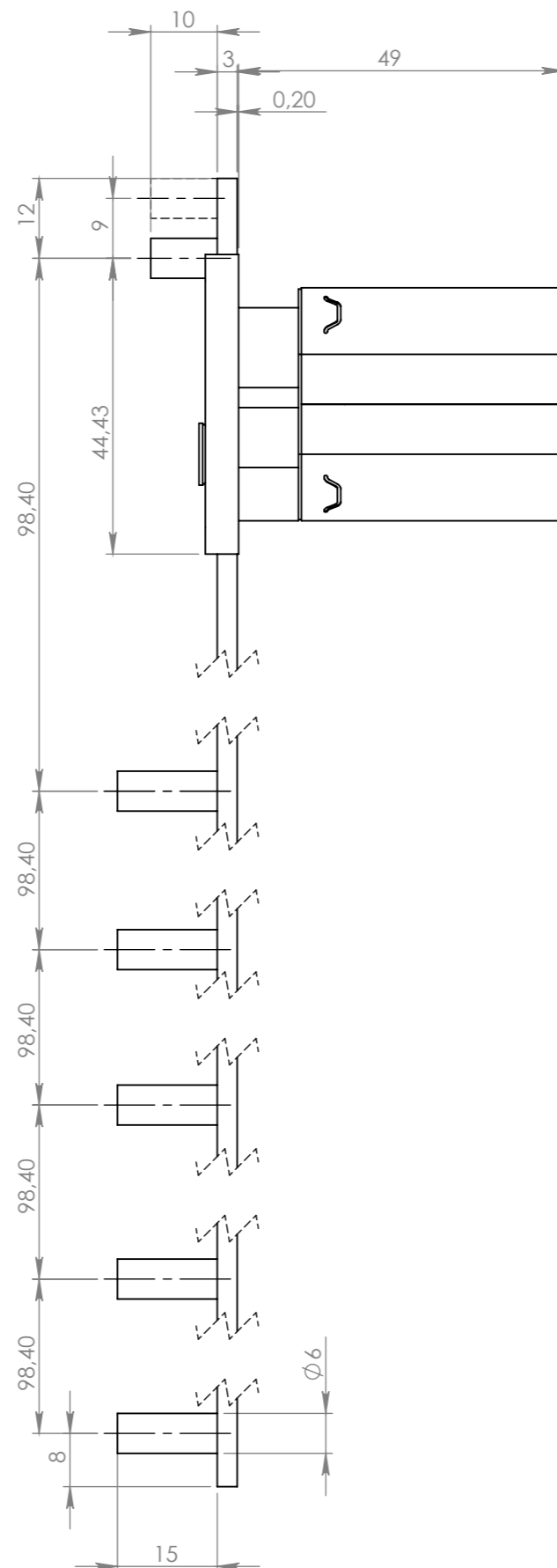
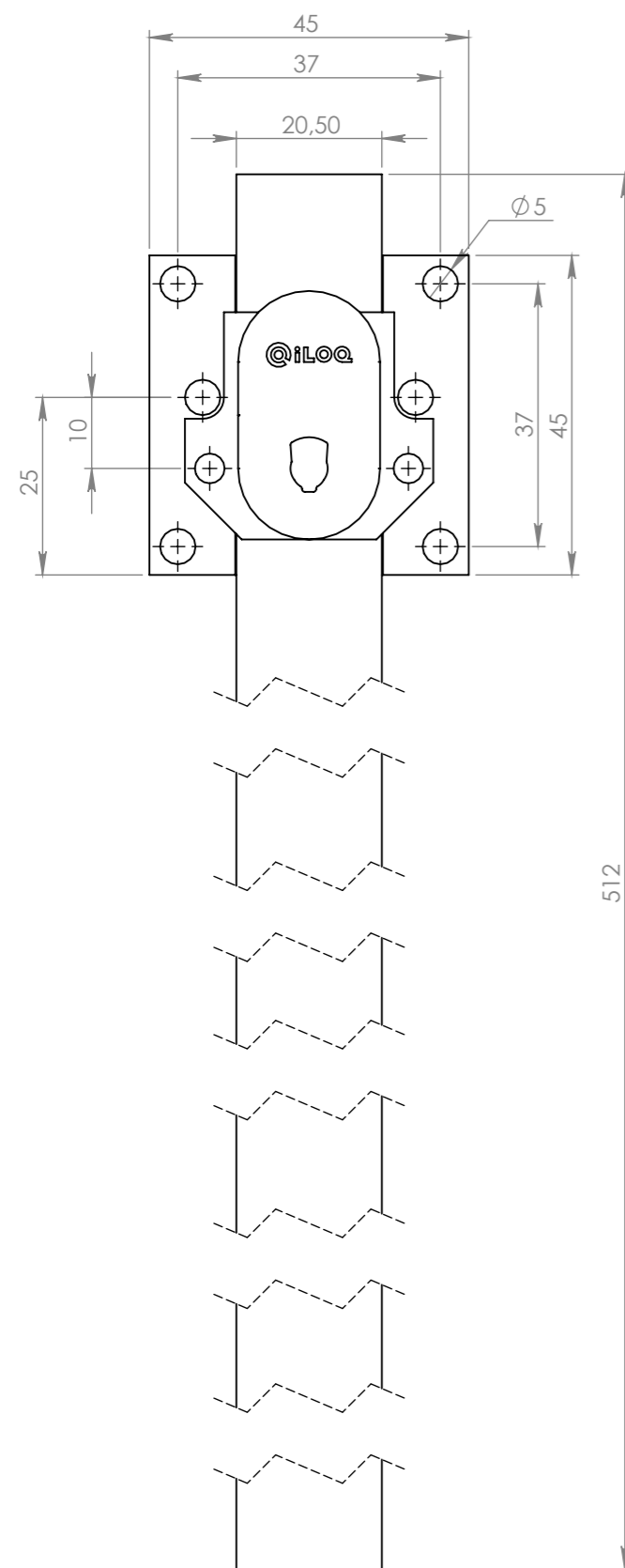


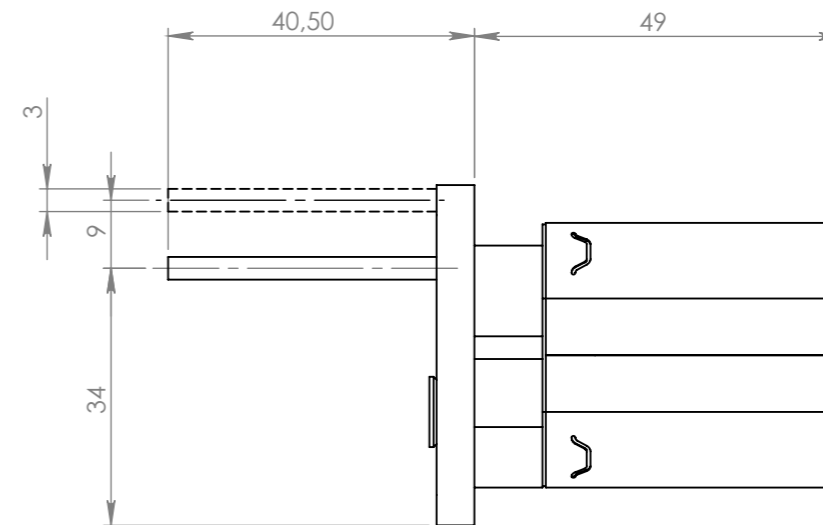
iLoq® and iLoq Oy are registered trademarks of iLoq Oy. This document and its contents are the property of iLoq Oy and must not be copied, reproduced or disclosed to any third party without prior written permission. Contravention will be prosecuted.

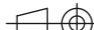



<div><div>F</div><div>E</div><div>E</div></div>	3	M004580	A	Cabinet lock parts	-	-	1	
	2	M002565.1	B	Round Escutcheon, E10.B5.ZC		-	1	
	1	M000522	B	Screw	Wurth	2021 5x35	2	
Item		Dwg no.	Revision	Description 1	Standard	Dimension	Default/Qty	
Design: TJu 19.01.2011			<div>Metric: mm</div> <div></div> <div>Size: A3</div>	Std. Size: --	<div>Tolerance:</div> <div>General tol. acc. ISO2768 - ?</div> <div>Geometric tol. symbols acc. ISO1101</div> <div>Surface rough. symbols acc. ISO1302</div>			
Drawn: TJu 19.01.2011				Material: -				
Chec'd: _ _				Finish: -				
Appr'd: _ _				Color, texture: -				
Product: Accessories			Sheet: 1/5	Title: Assembly instructions A10.32 For cabinet lock				
<div><div><div>All rights reserved. Copyright © 2006</div><div>iLOQ Oy <a href="http://www.ilooq.com">http://www.ilooq.com</a></div></div></div>				Sales code A10.32		Drawing number:		Rev. F



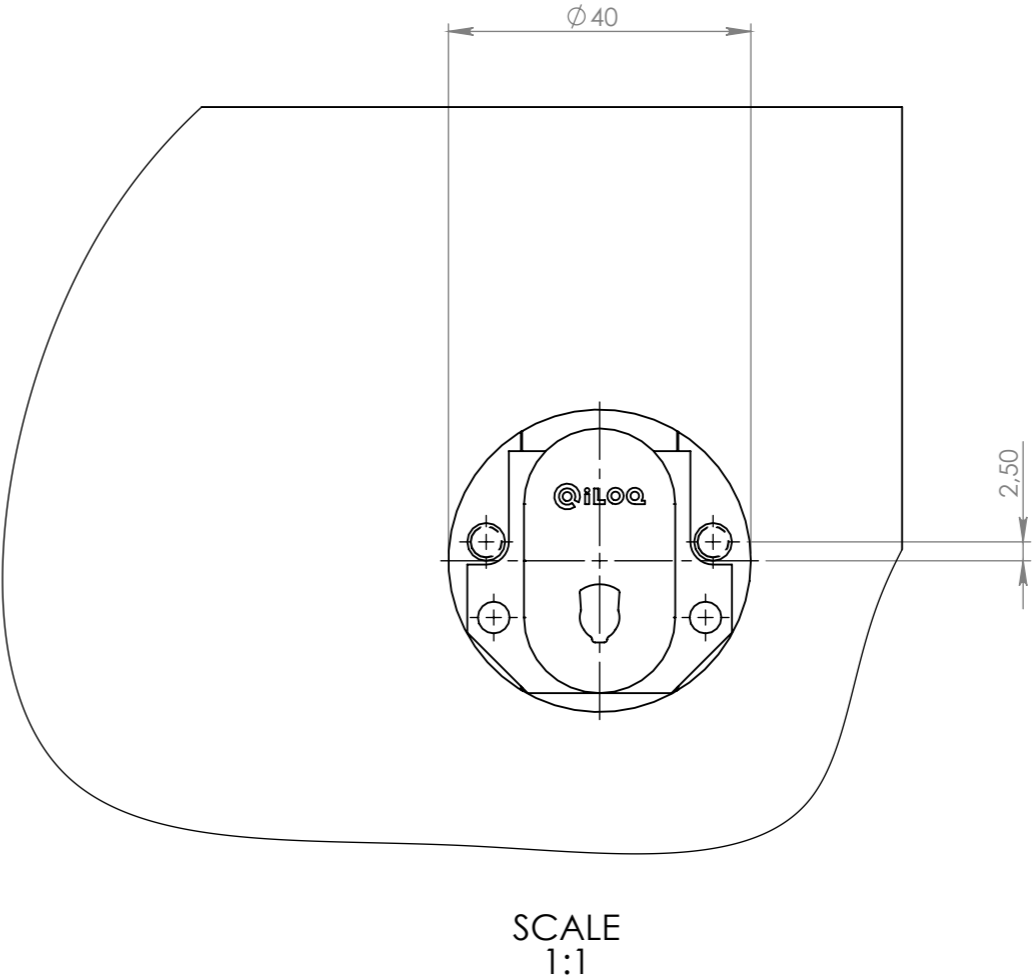
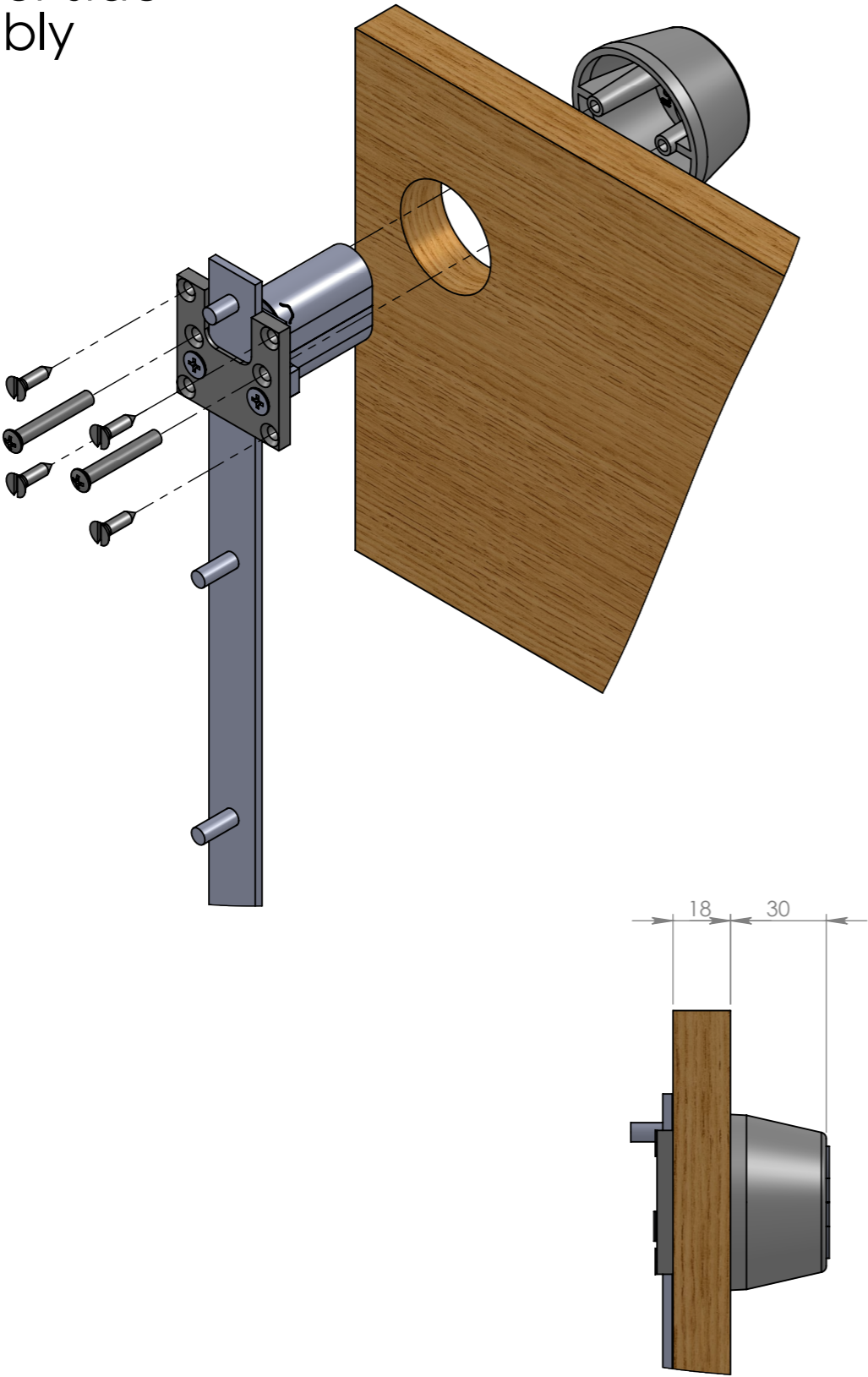
With A10.70



Design: TJU 19.01.2011	Metric: mm	Std. Size: - -	Tolerance: General tol. acc. ISO2768 - ? Geometric tol. symbols acc. ISO1101 Surface rough. symbols acc. ISO1302	
Drawn: TJU 19.01.2011		Material: -		
Check'd: -	Size: A3	Finish: -		
Appr'd: -		Color, texture: -		
Product: Accessories	Sheet: 2/5	Title: Assembly instructions A10.32 For cabinet lock		
 All rights reserved. Copyright © 2006 <a href="http://www.iloq.com">http://www.iloq.com</a>		Sales code	Drawing number:	Rev.
		A10.32		F

iLoq® and @iLoq™ are registered trademarks of iLoq Oy. This document and its contents are the property of iLoq Oy and must not be copied, reproduced or disclosed to any third party without prior written permission. Contravention will be prosecuted.

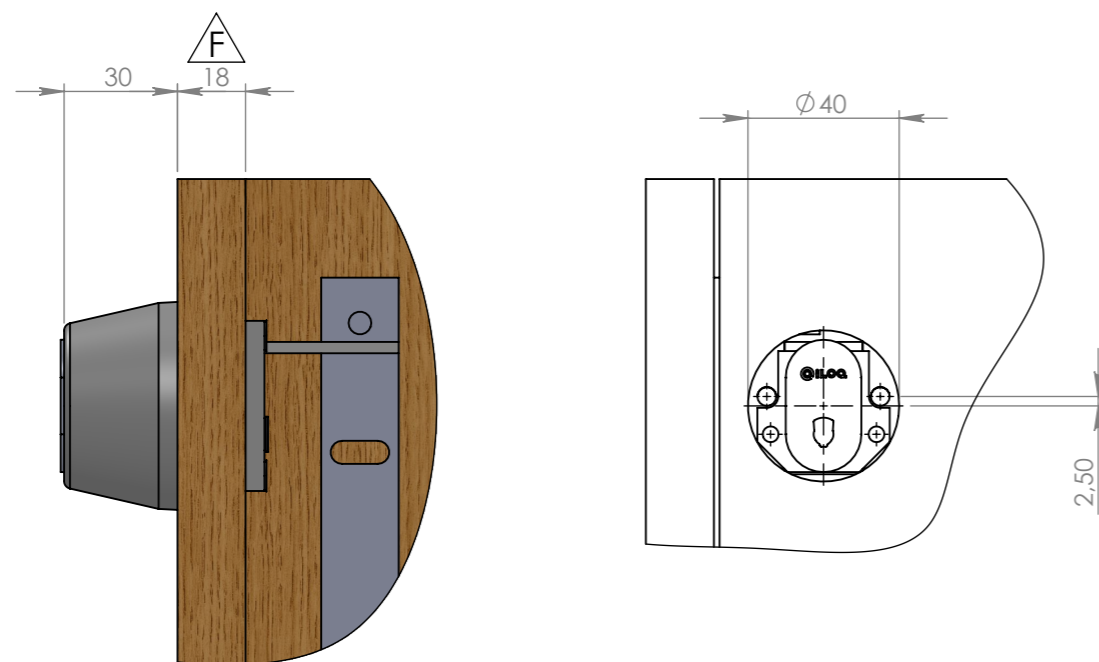
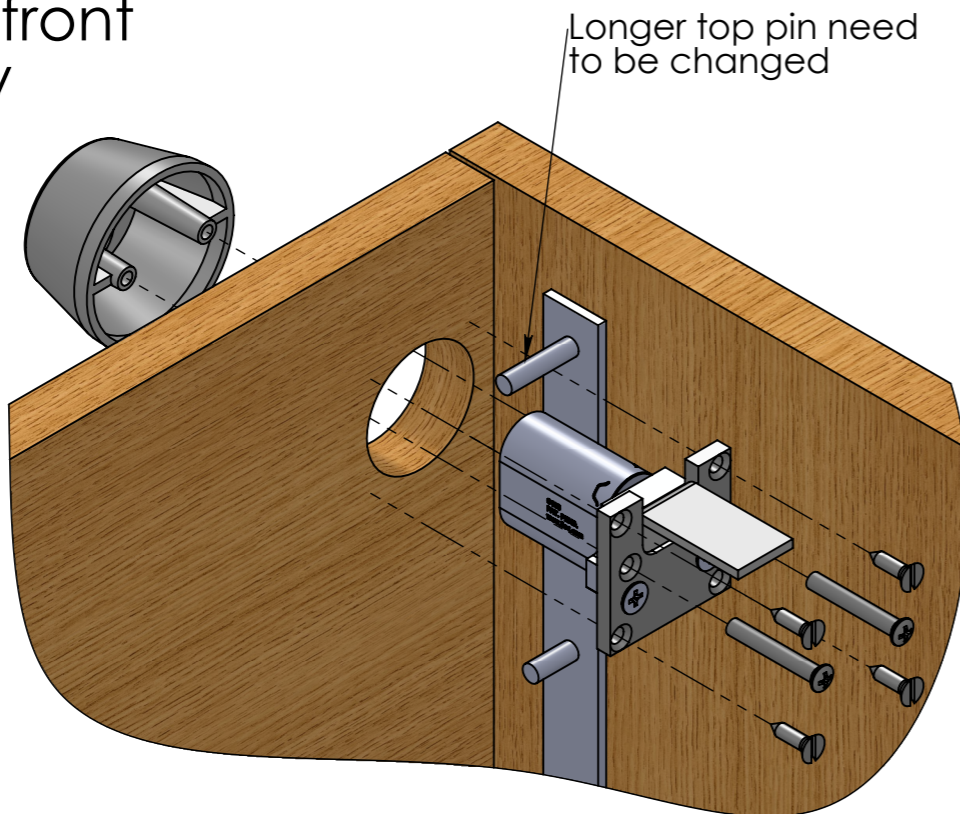
Cylinder side assembly



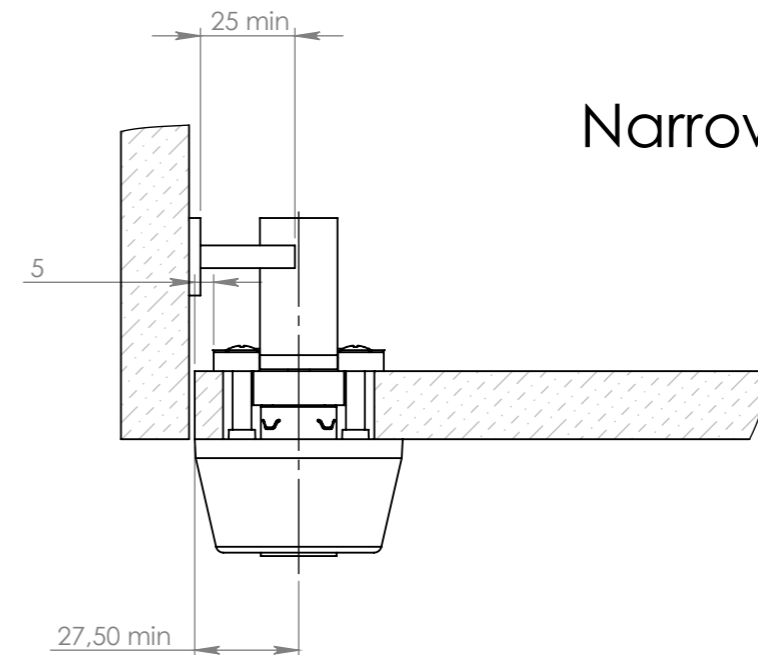
Design: TJu 19.01.2011	Metric: mm	Std. Size: - -	Tolerance: General tol. acc. ISO2768 - ? Geometric tol. symbols acc. ISO1101 Surface rough. symbols acc. ISO1302
Drawn: TJu 19.01.2011		Material: -	
Chec'd: - -		Finish: -	
Appr'd: - -	Size: A3	Color, texture: -	Title: <b>Assembly instructions A10.32</b> <b>For cabinet lock</b>
Product: Accessories	Sheet: 3/5		
 All rights reserved. iLOQ Oy Copyright © 2006 <a href="http://www.ilooq.com">http://www.ilooq.com</a>		Sales code <b>A10.32</b>	Drawing number:
			Rev. <b>F</b>

iLoq® and iLoq™ are registered trademarks of iLoq Oy  
This document and its contents are the property of iLoq Oy and must not be copied, reproduced or disclosed to any third party without prior written permission. Contravention will be prosecuted.

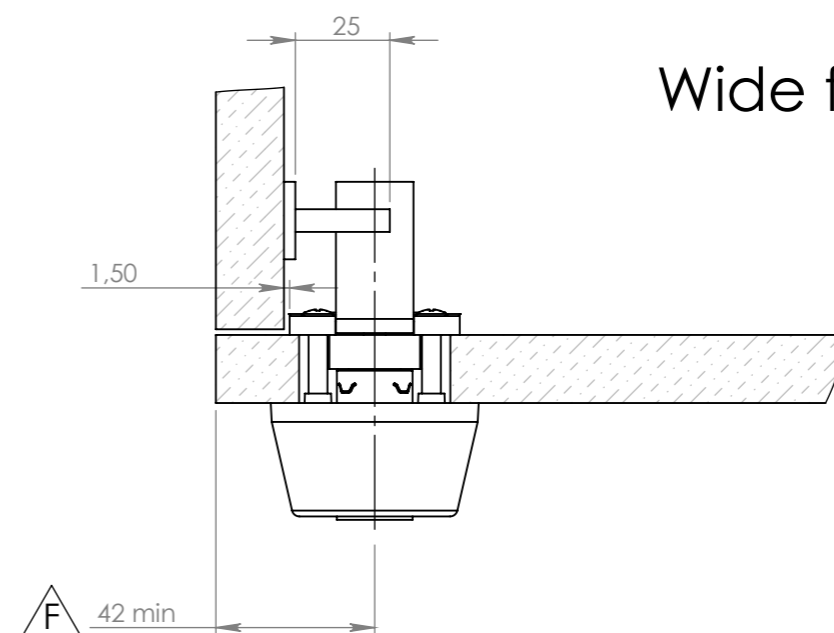
## Cylinder front assembly



## Narrow front panel



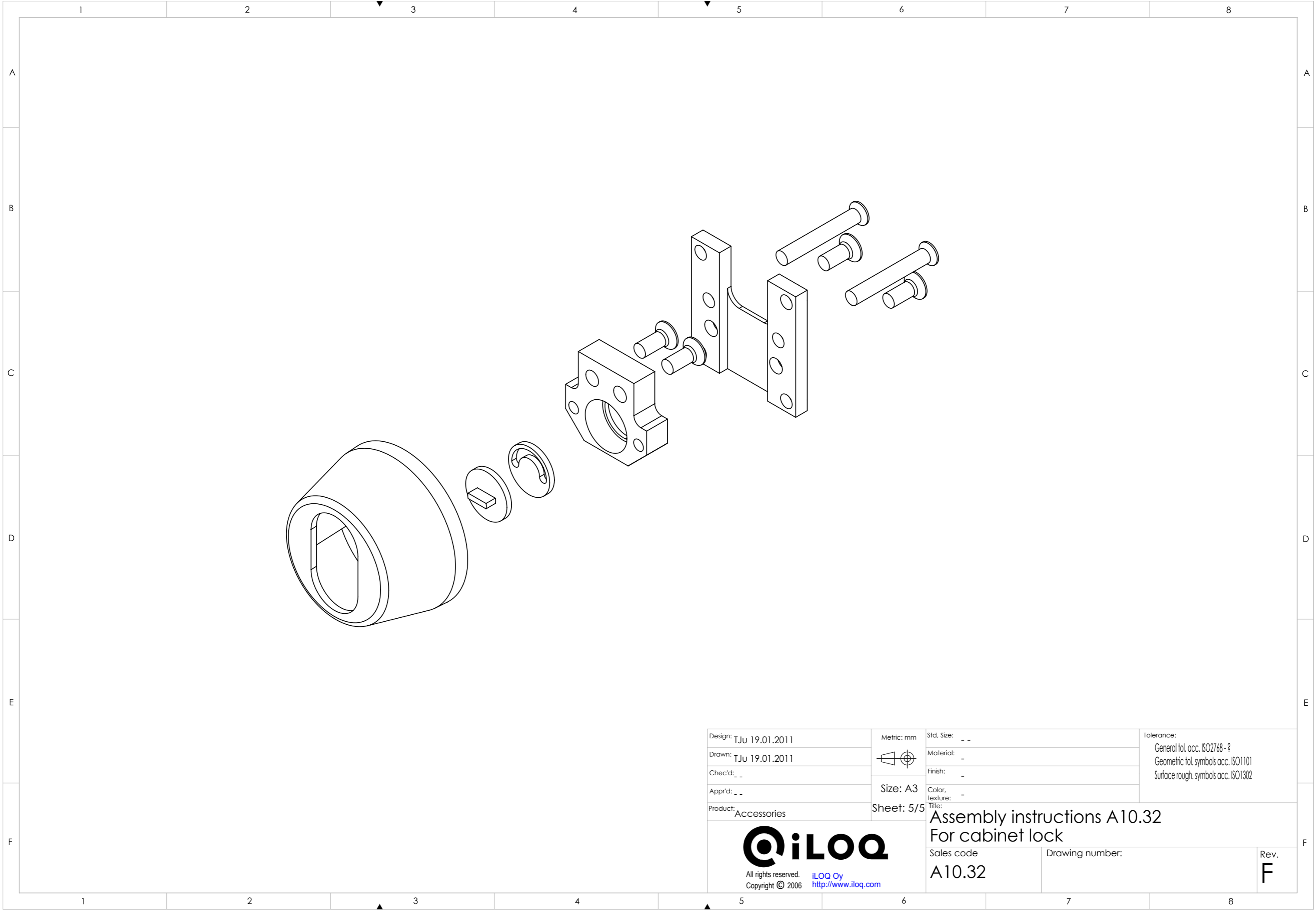
## Wide front panel

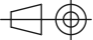



Design: TJu 19.01.2011	Metric: mm	Std. Size: - -	Tolerance: General tol. acc. ISO2768 - ? Geometric tol. symbols acc. ISO1101 Surface rough. symbols acc. ISO1302
Drawn: TJu 19.01.2011		Material: -	
Chec'd: -		Finish: -	
Appr'd: -	Size: A3	Color, texture: -	Title: <b>Assembly instructions A10.32</b> <b>For cabinet lock</b>
Product: Accessories	Sheet: 4/5		
 All rights reserved. iLOQ Oy Copyright © 2006 <a href="http://www.ilooq.com">http://www.ilooq.com</a>		Sales code <b>A10.32</b>	
		Drawing number:	Rev. <b>F</b>

iLoq® and iLoq™ are registered trademarks of iLoq Oy

This document and its contents are the property of iLoq Oy and must not be copied, reproduced or disclosed to any third party without prior written permission. Contravention will be prosecuted.



Design: TJu 19.01.2011		Metric: mm	Std. Size: _ _	Tolerance: General tol. acc. ISO2768 - ? Geometric tol. symbols acc. ISO1101 Surface rough. symbols acc. ISO1302
Drawn: TJu 19.01.2011			Material: _	
Chec'd: _ _			Finish: _	
Appr'd: _ _		Size: A3	Color, texture: _	
Product: Accessories	Sheet: 5/5	Title: <b>Assembly instructions A10.32</b> <b>For cabinet lock</b>		
 All rights reserved. iLOQ Oy Copyright © 2006 <a href="http://www.ilooq.com">http://www.ilooq.com</a>		Sales code <b>A10.32</b>		Drawing number:
				Rev. <b>F</b>