

D50S.531.SB
EUROPROFILE HALF CYLINDER
FOR SWING HANDLE

MOUNTING AND CARE INSTRUCTIONS
USER GUIDE

TABLE OF CONTENTS

| | | |
|----------|---|----------|
| 1 | BEFORE INSTALLATION | 3 |
| 2 | AFTER INSTALLATION | 3 |
| 3 | CARE..... | 3 |
| 4 | INSTALLATION D50S.531 IN SWING HANDLES | 4 |
| 5 | KNOB CHANGE | 5 |
| 6 | INSTRUCTIONS FOR USE | 6 |
| 6.1 | OPENING | 6 |
| 6.2 | CLOSING | 7 |
| 7 | CYLINDER EXTENSION | 7 |
| 8 | GENERAL NOTES | 9 |
| 9 | DECLARATION OF CONFORMITY | 9 |

1 BEFORE INSTALLATION

1. The instructions should be carefully followed during installation. These instructions and any maintenance instructions should be passed on by the installer to the user.
2. iLOQ D50S cylinders must be installed and used carefully without excessive force.
3. The product should not be modified in any way except in accordance with the modifications described in these instructions.
4. Care should be taken to ensure that any seals or weather-stripping fitted to the complete door assembly, does not inhibit the correct operations of D50S cylinder.
5. Care should be taken to ensure that no projection of the D50S cylinder and associated parts, can prevent the door swinging freely.
6. All components necessary for the specific installation should be fitted in order to ensure compliance with EN15684 standard.
7. Before fitting D50S cylinder to a fire/smoke resisting door, the fire certification should be examined, to ensure conformity.
8. The iLOQ cylinders are successfully tested according the EN 1634-1 (EUF129-19003368) for 120 minutes in a hinged single leaf steel door.
9. The cylinder must project less than 1 mm on outside of the door to ensure proper operation.
10. No liability is accepted for damage to the doors or components due to incorrect installation.
11. D50S.531 cylinder is only available in one length with 30/10 mm, it is only allowed to use max. one 5 mm extension with this cylinder version (AD50.E05).
12. This type of cylinder is developed for the use in swing handles (e.g. for cabinets) which are prepared for DIN half cylinder. Do not use the cylinder for other purposes resp. use cases.
13. The cylinder has an operating angle of $\sim -40^\circ$ (\sim from 5 o'clock to 6 o'clock clockwise), do not try to overturn the cam in any direction.
14. The integrated cam is spring supported, please use with care.
15. We reserve the right to make modifications or further technical developments without further notice.
16. If there are any deviations from the contents in foreign language versions of the documentation, the English original shall apply in case of doubt.

2 AFTER INSTALLATION

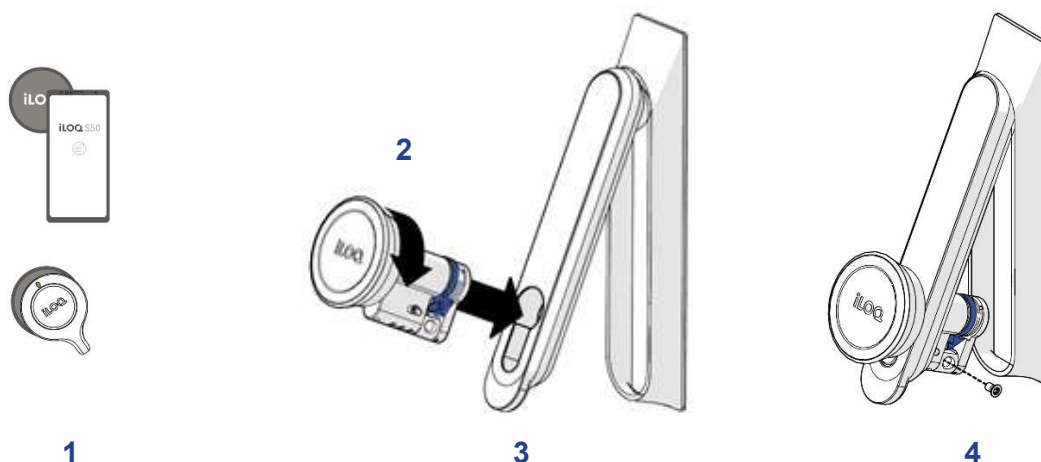
Test the cylinder functionality after installation to ensure that it does not prevent the lock application from working properly.

3 CARE

The product is designed to be maintenance-free. It does not require any regular maintenance.

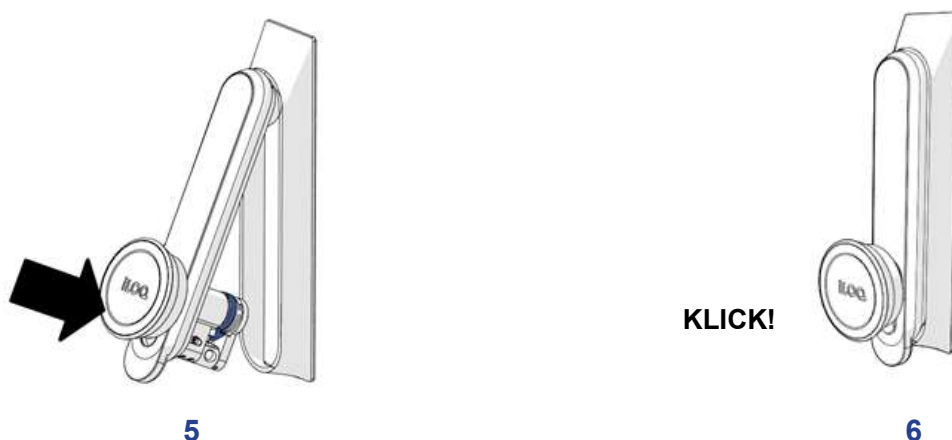
4 INSTALLATION D50S.531 IN SWING HANDLES

Note: The displayed swing handle below act only as an example to get an idea how to install the cylinder. Different swing handles are available in the market, but the installation should be similar. For additional (installation) information please check the documentation from the swing handle manufacturer.



Note: Perform the functionality test with open door, close the door only after everything is working fine.

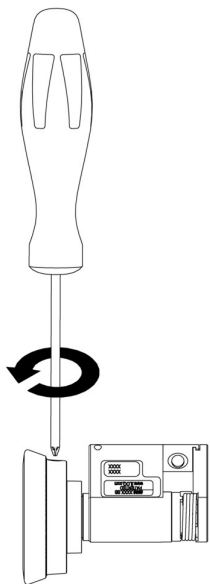
1. Hold a valid key against the lock reader knob and wait until the key shows a green light (see chapter 6).
2. Turn the knob clockwise until the cam is pointing to the 6 o'clock position.
3. Slide the lock cylinder into the swing handle.
4. Fix the cylinder into the swing handle by using the iLOQ fixing screw from the package (A10.155). Use a tightening torque of 0.9...1.1 Nm.



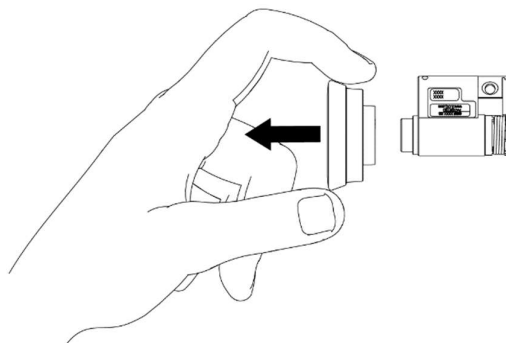
5. Make sure that the cylinder is in place and secured, and then move the cylinder with the swing handle lever back into the housing.
6. Activate the cylinder by using a Smartphone or Key Fob (with access rights) to test if the combination is working properly.
7. If applicable: Fix the backside housing of the swing handle which is covering the cylinder.

5 KNOB CHANGE

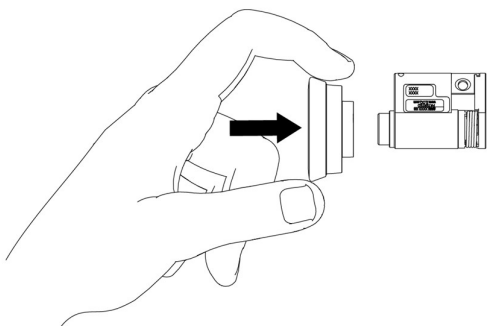
If the reader knob needs a replacement knob, see the following instructions how to replace the reader knob correctly.



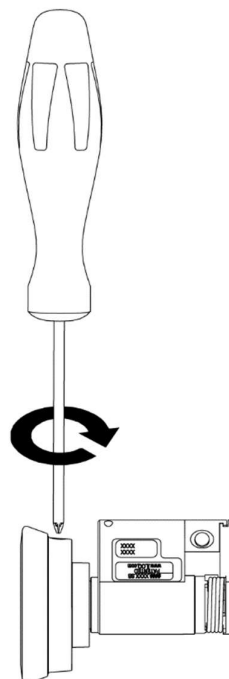
1. Loosen the fixing screw



2. Remove the current knob



3. Attach the new knob



4. Tighten the fixing screw
(1.5 Nm tightening torque)

6 INSTRUCTIONS FOR USE

6.1 OPENING

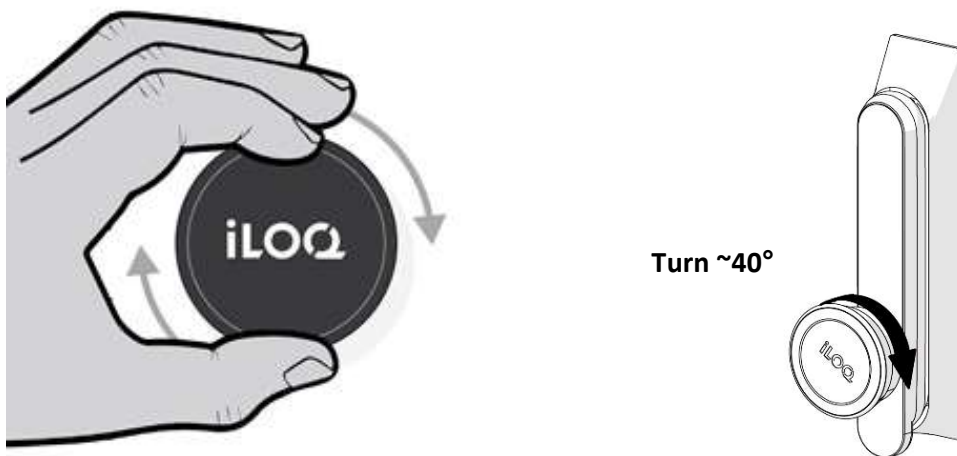
1. Hold a valid key against the lock-reader knob and wait until the key shows a green light.

Note: Due to the large variety of Android phone models and operating system versions, iLOQ cannot guarantee that all NFC-enabled Android phones will work seamlessly with our locks.

Before using the lock, check the location of the NFC antenna in your phone so that you know the best position to hold the phone against the lock-reader knob.



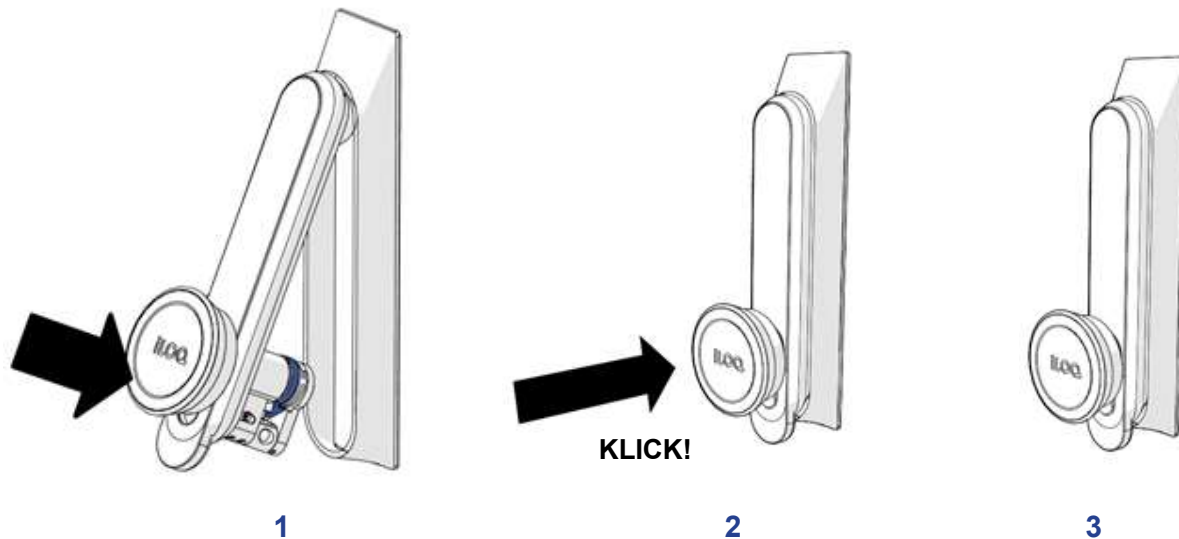
2. Turn the lock-reader knob clockwise ($\sim 40^\circ$) to the six o'clock position and pull and release the lever of the swing handle out of the housing unlock the door.



3. Pull the lever and open the door.

6.2 CLOSING

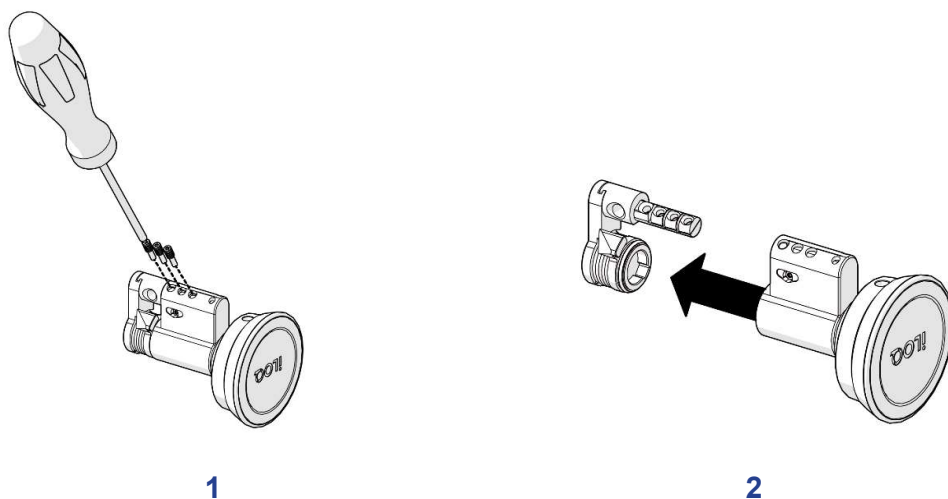
For closing/securing a credential with access rights is not necessary.



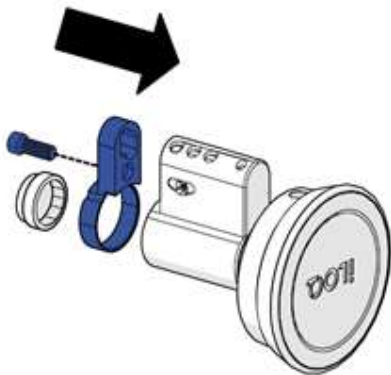
1. To lock and secure the application close the door and push the lever (incl. the cylinder) back into the swing handle housing
2. The application is secured when the "click" sound appears.
3. Check if the handle is locked and secured.

7 CYLINDER EXTENSION

The cylinder length is easily adjustable with one 5 mm D50 cylinder extension, to extend from a basic length of 30 mm up to 35 mm (only the knob side is extendable and only one 5 mm extension peace is allowed).

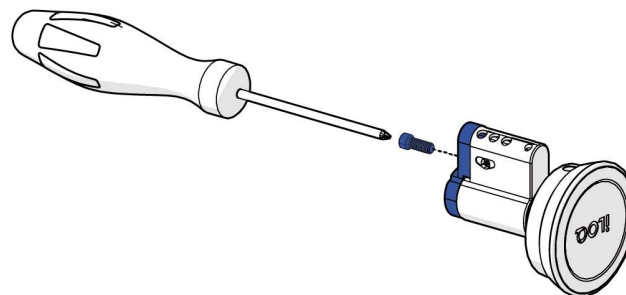


1. Remove the three body fixing screws with a Torx T6 tool.
2. Pull the lock unit apart.



3

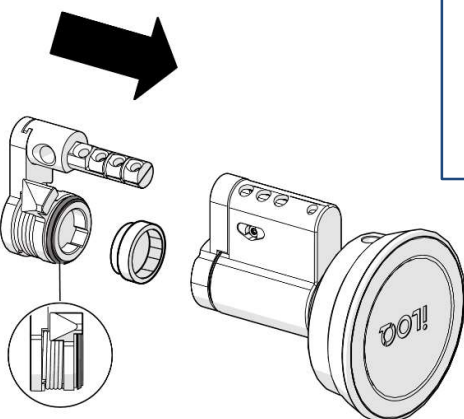
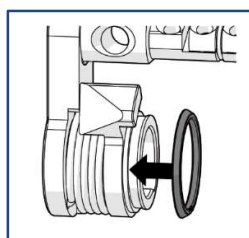
3. Insert the round extension piece inside the housing extension part opposite the side with the black sealing, so that the recess is placed next to the black O-ring.



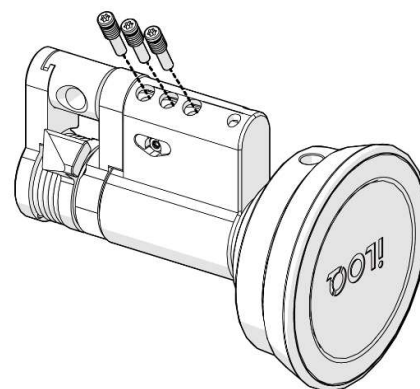
4

4. Fix the extension piece with the fixing screw.

Note:



5



6

5. Insert the lock unit with the extension piece onto the other part of the cylinder.
6. Fix the lock unit onto the cylinder using 3 fixing screws with a Torx T6 tool. Tighten the screws. Use a tightening torque of 0.55...0.65 Nm.

8 GENERAL NOTES

1. Care should be taken to ensure that any seals or weather-stripping fitted to the complete door assembly, does not inhibit the correct operations of the cylinder.
2. Care should be taken to ensure that no projection of the cylinder and associated parts, can prevent the door swinging freely.
3. All components necessary for the specific installation should be fitted.
4. Before fitting D50S cylinder to a fire/smoke resisting door, the fire certification should be examined, to ensure conformity.
5. The iLOQ cylinders are successfully tested according the EN 1634-1 (EUF129-19003368) for 120 minutes in a hinged single leaf steel door.
6. The key is to be kept securely so that only authorized person may have access.
7. In case of losing a key, blocklisting of the lost key shall be done with the iLOQ Manager software and affected locks shall be reprogrammed.

9 DECLARATION OF CONFORMITY

The products mentioned inside this user guide are in conformity with the requirements of the following directives:

- 2014/53/EU Radio Equipment Directive (RED)
- 2011/65/EU Restriction of the use of certain hazardous substances (RoHS)

The conformity was assessed in accordance with RED module A by using the following harmonized and other EN standards:

RED:

| | |
|-------------------|--|
| Art 3.1(a) Safety | EN 62368-1:2014 + AC:2015 + AC2:2015 |
| Art 3.1(b) EMC EN | EN 301 489-1 v2.2.3 EN 301 489-3 v2.1.1 |
| Art 3.2 Spectrum | EN 300 330 v2.1.1 |
| RoHS | EN 50581:2012 |